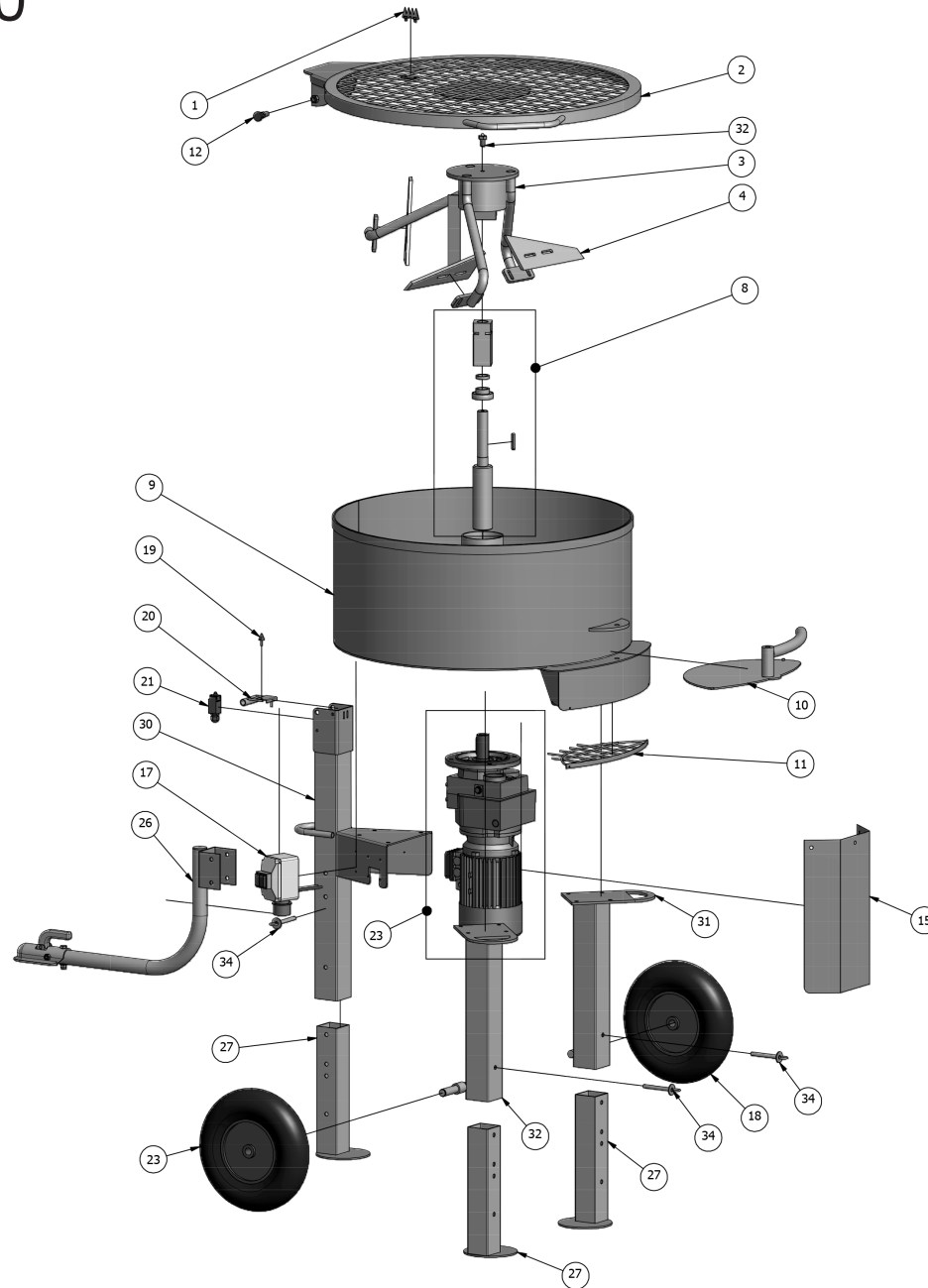


E300



POS.	PART NO.	DESCRIPTION
1	50641	Sack knife, complete
2	50542	Cover
3	50427	F-model mixer heads (without shovels)
4	50444	F-model metal shovels, complete set (4 pcs)
8	50653	Drive shaft, complete, Fabrika
9	50504	Container
10	50376	Trap door, complete
11	50352	Outlet protection
12	50328	Positioning bolt
15	50560	Engine cover
17	50302	Main switch, 380V
18	50341	Wheel, 25x75 (1 pc)
19	50327	Rubber damper
20	50602	Plate for cover switch
21	50326	Mechanical lid switch
23	50204	Motor + gear, 4kW 3x380V, Fabrika
27	50537	Support leg
30	50532	Front leg
31	50534	Back leg, left
32	50533	Back leg, right
34	50535	Legsplit
35	50642	Top bolt with ball

POS.	PART NO.	OTHER SPARE PARTS
	50442	Metal shovels E300, complete set (3 pcs)
	50446	Metal shovels E300, complete set (4 pcs)
	50466	Rubber shovels E300, complete set (3 pcs)
	50465	Rubber shovels E300, complete set (4 pcs)
	50461	F-model rubber shovels, complete set (4 pcs)
	50205	Motor + gear, 4.0kW 3x380V, Motovario
	50654	Drive shaft, Motovario
	50324	E-stop lid for main switch
	30300	Rubber protection f/on-off
	50323	Emergency stop f/mixer yellow, old model
	50265	Main relais, 6.3-10A
	50271	Undervoltage relais, 240V
	50272	Undervoltage relais, 380V
	50622	Dust cover (lid)
	50628	Filling cap for dust cover
26	50645	Transportarm incl. bolts
	50108	Extension cable, 3x380V CEE, 5m
	50106	Extension cable, 3x380V CEE, 10 m